

Type 41xxC / 61xxC

Quick disconnect for cavity pressure and cavity temperature

- Ideal for mold inserts
- Ideal for small parts
- Any sensor position possible when using different inserts
- Safe mounting and demounting of the inserts
- Sophisticated connection technology
- Patent pending
- Waterproof



Cavity pressure



Cavity temperature

Description

Many molded parts are not made in the mold platen itself but with the help of mold inserts. This makes it easier to manufacture and maintain the cavities.

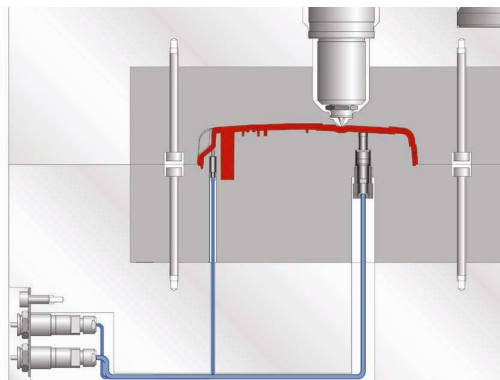
Cavity pressure and cavity temperature sensors however can very often not be used due to limited space. In addition it is conceivably unhandy to handle fix installed sensors when mounting and dismantling the mold inserts.

With the new PRIAMUS quick disconnects for cavity pressure and cavity temperature mold inserts can be mounted and dismantled by a simple plug connection while the sensors themselves remain in the mold insert.

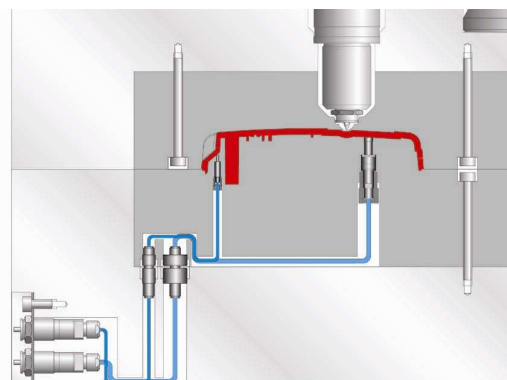
This patent pending application is especially fail-safe because the sensors do not stay in the mold platen as a "bolt" and can therefore not be damaged. They rather stay safely packed in the mold insert even after dismounting.

The essential advantage of this system however is the fact that different mold inserts with different sensor positions can be used without changing the position of the quick disconnects. Opposite to a sensor which is installed in the mold platen itself the sensor position can still be selected very flexible according to the design of the molded part. The dimension of the mold insert is of no importance.

Quick disconnects are available for PRIAMUS cavity temperature sensors as well as for PRIAMUS cavity pressure sensors with sensitivity detection (PRIASED™).



Installation without quick disconnects



Installation with quick disconnects

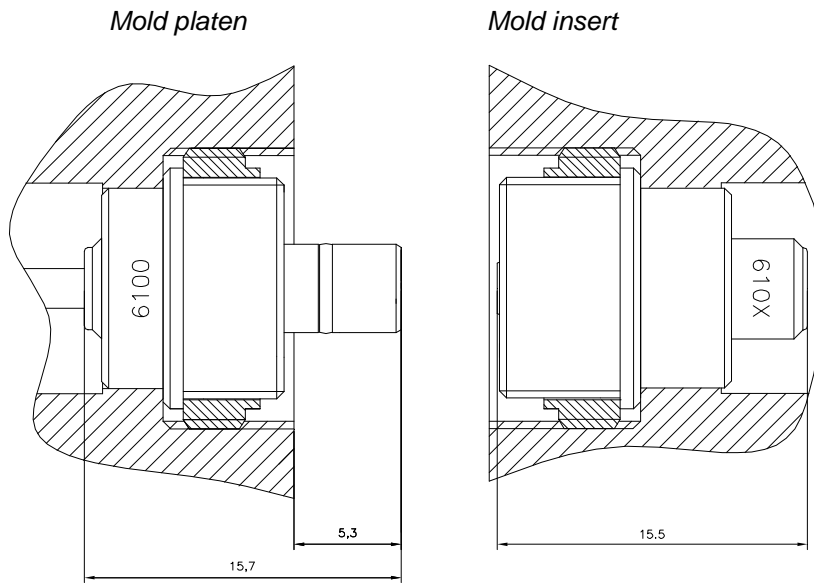
technische Änderungen vorbehalten

Technical Data

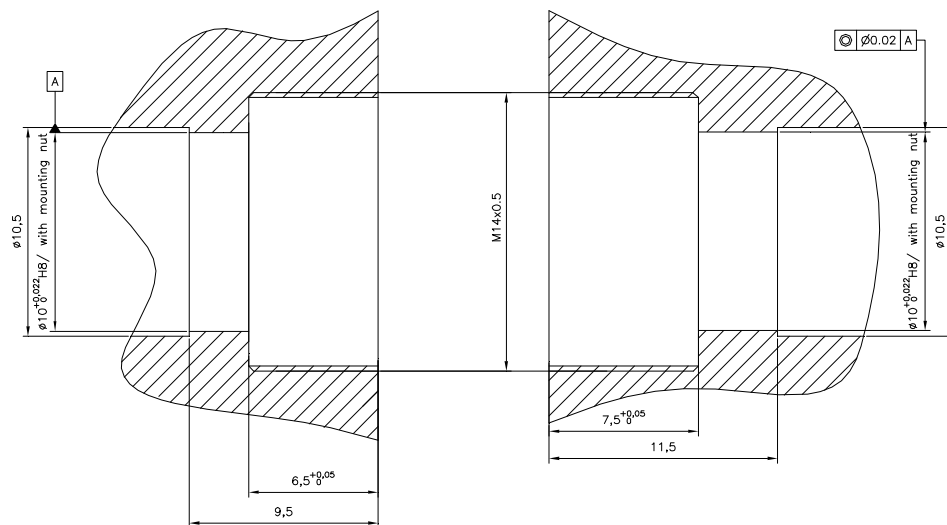
Maximum mold temperature	°C	200
Insulation resistance (Quick disconnect pressure)	Ω	$> 10^{13}$ (at 20 °C)

Dimensions

Quick disconnects for cavity pressure types 6100... and 6101...



Mounting bores



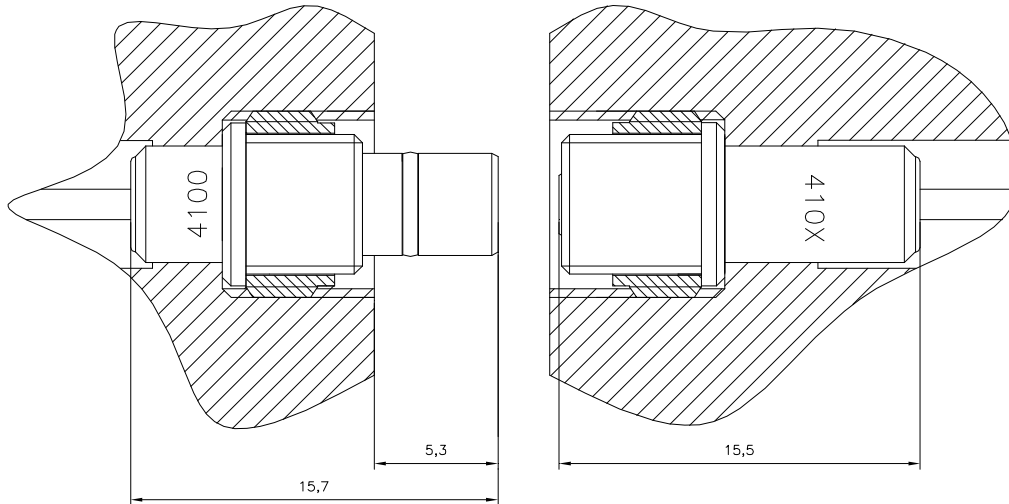
technische Änderungen vorbehalten

Quick disconnects for cavity temperature types 4100Xx,xA1 / 4100Xx,xA1-M (open wires) and 410XC...

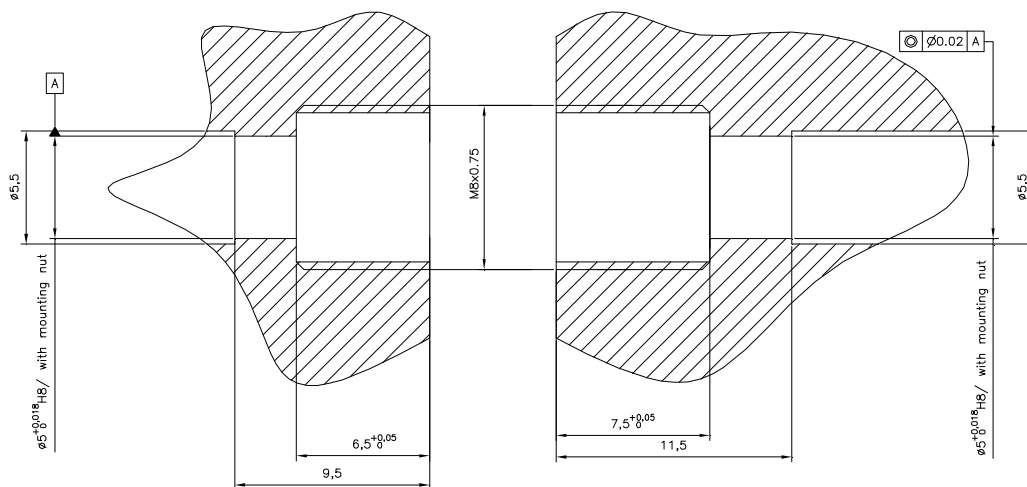
Mold platen

Mold insert

Open wires

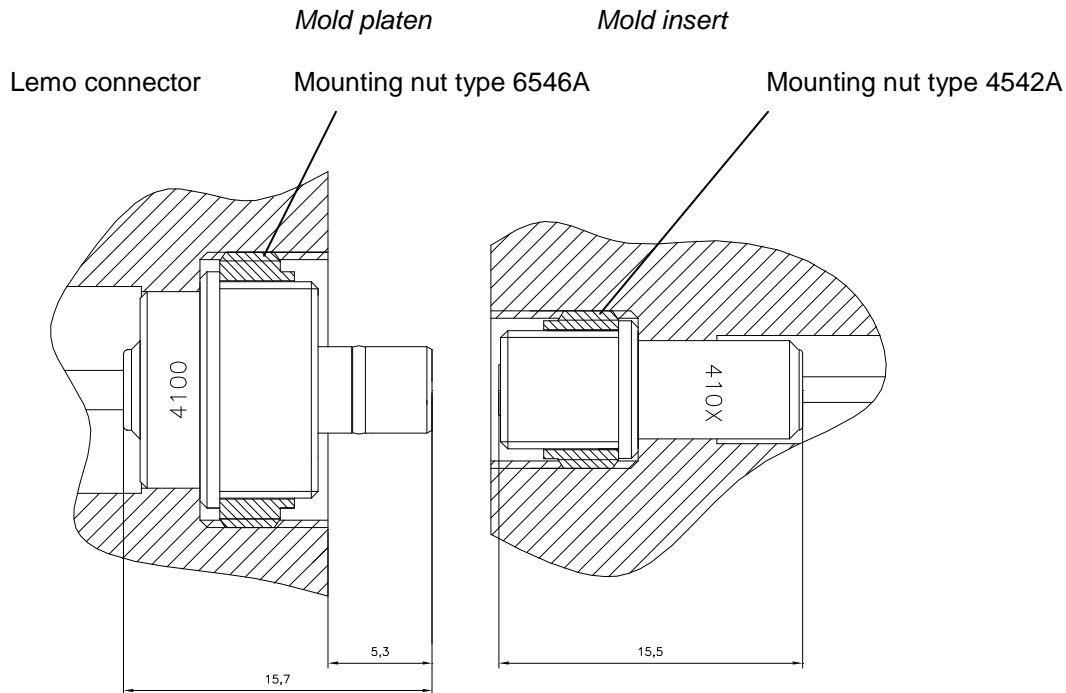


Mounting bores

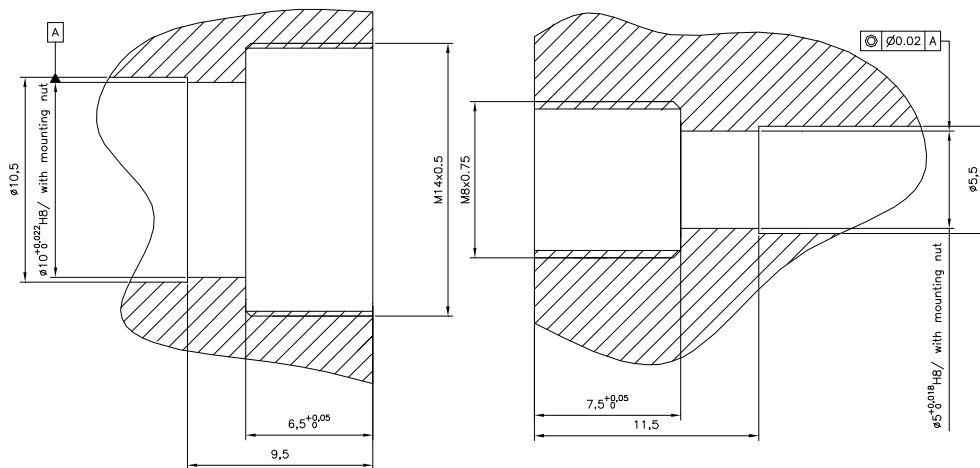


technische Änderungen vorbehalten

Quick disconnects for cavity temperature types 4100Xx,xA2 (Lemo connector) and 410XC...



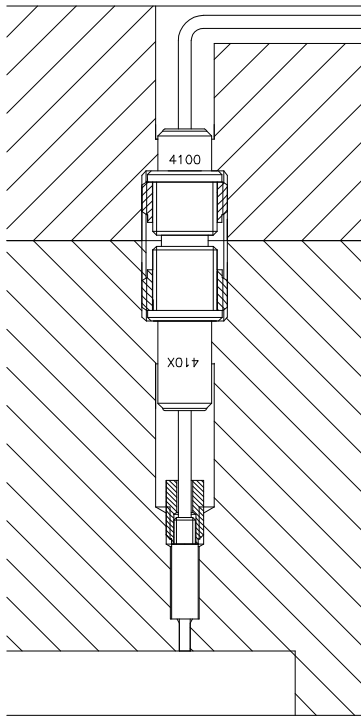
Mounting bores



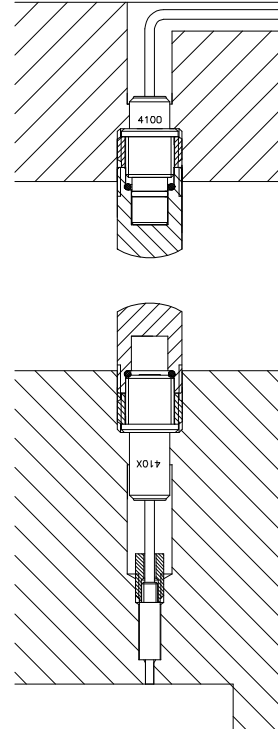
technische Änderungen vorbehalten

Waterproof

The quick disconnects are waterproof under the condition they are mounted (see drawing left). For cleaning the quick disconnects need to be fitted mandatory with the protective caps.



Sensor mounting only with mounting nut



Open quick disconnect with protective cap

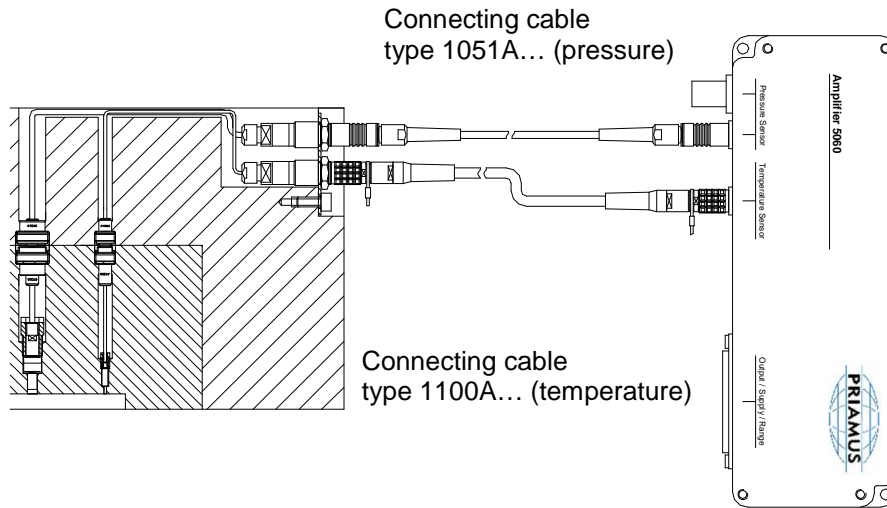
Installation of quick disconnects (with mounting nut)

Choose the fit "H8" for the mounting bore.

Use the installation tool type 4563A for mounting nuts with M 8x0,75 threads (type 4542A). For mounting nuts with M 14x0.5 threads (type 6546A), use the installation tool type 6563A.

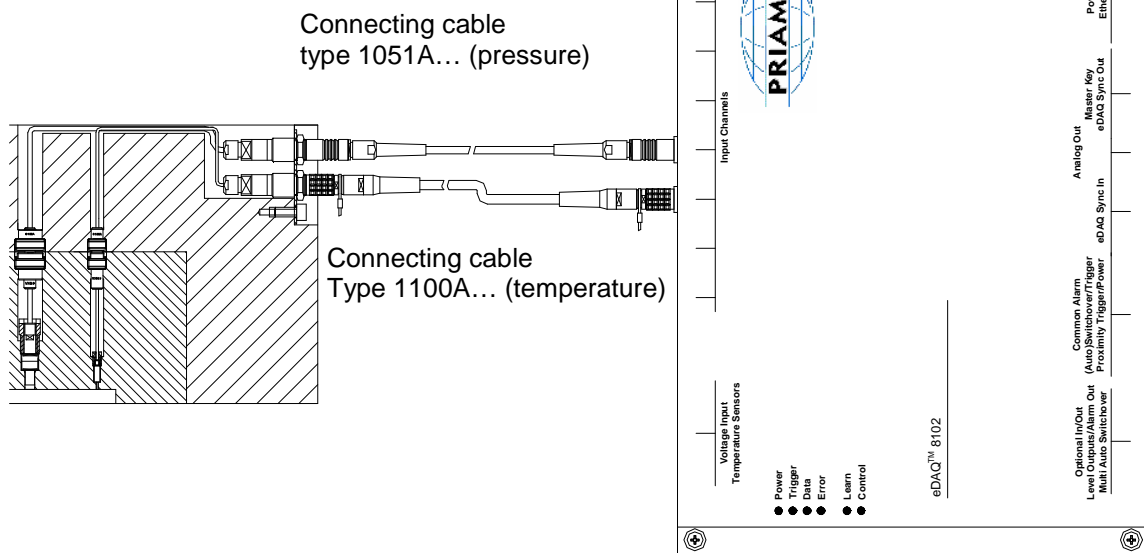
Connecting of the measuring signals

Interface to the one-channel amplifier type 5060... for pressure and temperature



Interface to the eDAQ™ type 8102... (Single signals)

Interface to the eDAQ™ Type 8102... (Multi Pin Connector)



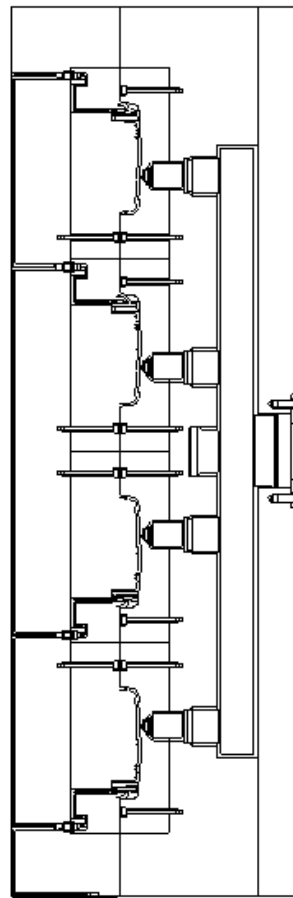
technische Änderungen vorbehalten

Cavity temperature
Cavity 1

Cavity temperature
Cavity 2

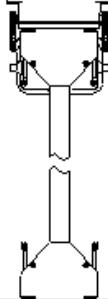
Cavity temperature
Cavity 3

Cavity temperature
Cavity 4

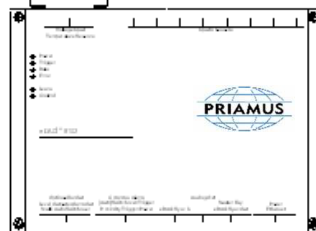


Hotrunner mold

Mounting connecting
housing / Multi pin
connector
type 1186A



Connecting cable
type 1151A... (temperature)



technische Änderungen vorbehalten



Accessories	Type
Mounting tool to tighten the mounting nut type 6546A	6563A
Cavity pressure sensors with sensitivity detection	6001B, 6002B, 6003B, 6006BA, 6007BA, 6010BA, 6011BA
Mounting tool to tighten the mounting nut type 4542A	4563A
Crimping pliers	1311A
Crimping contacts	1312A
Ejector tool for crimping contacts	1310A
Mounting Connector Housing, 10-pin	1186A10
Mounting Connector Housing, 16-pin	1186A16
Mounting Connector Housing, 24-pin	1186A24
Mounting Connector Housing, 32-pin	1186A32
Multi pin connector temperature	1189B
Multi pin connector pressure	1190B

Order Codes	Type	Scope of delivery
Quick disconnects for cavity pressure for installation in the mold platen (pos.)	6100Cx,x	Mounting nut type 6546A Mounting plate type 6581A Protective cap type 1308A
Quick disconnect for cavity pressure with open wire and crimp contact for multi pin connector for installation in the mold platen (pos.)	6100Cx,x-M	Mounting nut type 6546A Mounting plate type 6581A Protective cap type 1308A
Quick disconnects for cavity pressure for installation in the mold insert (neg.) for sensors type 6001B, 6002B, 6003B	6101Cx,x	Mounting nut type 6546A Protective cap type 1308A
Quick disconnects for cavity pressure for installation in the mold insert (neg.) for sensors type 6006BA, 6007BA, 6010BA, 6011BA	6103Cx,x	Mounting nut type 6546A Protective cap type 1308A
Quick disconnects for cavity temperature incl. cavity temperature sensor type 4003B for installation in the mold insert (neg.)	4103Cx,x	Mounting nut type 4542A Distance sleeve type 4521A Identification plate Protective cap type 1301A
Quick disconnects for cavity temperature incl. cavity temperature sensor type 4005A with machinable sensor front for installation in the mold insert (neg.)	4105Cx,x	Mounting nut type 4542A Distance sleeve type 4521A Identification plate Protective cap type 1301A

technische Änderungen vorbehalten

Quick disconnects for cavity temperature incl. cavity temperature sensor type 4007A for installation in the mold insert (neg.)	4107Cx,x	Mounting nut type 4542A Distance sleeve type 4521A Identification plate Protective cap type 1301A
Quick disconnects for cavity temperature incl. cavity temperature sensor type 4009A for installation in the mold insert (neg.)	4109Cx,x	Mounting nut type 4542A Distance sleeve type 4521A Identification plate Protective cap type 1301A
Quick disconnects for cavity temperature incl. cavity temperature sensor type 4011A for installation in the mold insert (neg.)	4111Cx,x	Mounting nut type 4542A Distance sleeve type 4521A Identification plate Protective cap type 1301A
Quick disconnect for cavity temperature with open wire for installation in the mold platen (pos.)	4100Cx,xA1	Mounting nut type 4542A Protective cap type 1301A
Quick disconnect for cavity temperature with open wire and crimp contact for multi pin connector, for installation in the mold platen (pos.)	4100Cx,xA1-M	Mounting nut type 4542A Protective cap type 1301A
Quick disconnect for cavity temperature with Lemo connector (incl. mounting plate type 6581A) for installation in mold platen (pos.)	4100Cx,xA2	Mounting nut type 6546A Protective cap type 1308A

Specify cable length (x,x) in [m] when ordering

