

Type 6411A

Force sensor

- Small dimension
- Separable connecting cable
- Sensor can still be used even if the cable was damaged
- Maximum operating temperature: 200 °C (390 °F)
- Suitable for injection molding processes as well as for other industrial applications



Description

The force sensor type 6411A stands out in its small dimension and is equipped with a separable connecting cable. This has the major advantage that – even the cable was damaged - the sensor can still be used.

Furthermore the force sensor can be operated by a maximum temperature range from up to 200 °C (390 °F). This corresponds with mold temperatures which can be often found in injection molding processes. Comparable force sensors however are usually limited to 120 °C (250 °F).

The sensor is not only suitable for injection molding process but can also be used for general industrial force measurement.

Technical data

Measuring range	N	0 ... 2500
Overload	N	3000
Sensitivity ¹⁾	pC/N	- 4,4
Maximum mold temperature ²⁾	°C	0 ... 200
Deviation of linearity	%	< +/- 1
Natural frequency ³⁾	kHz	≈ 200
Insulation resistance (at 20 °C)	Ω	≥ 10 ¹³

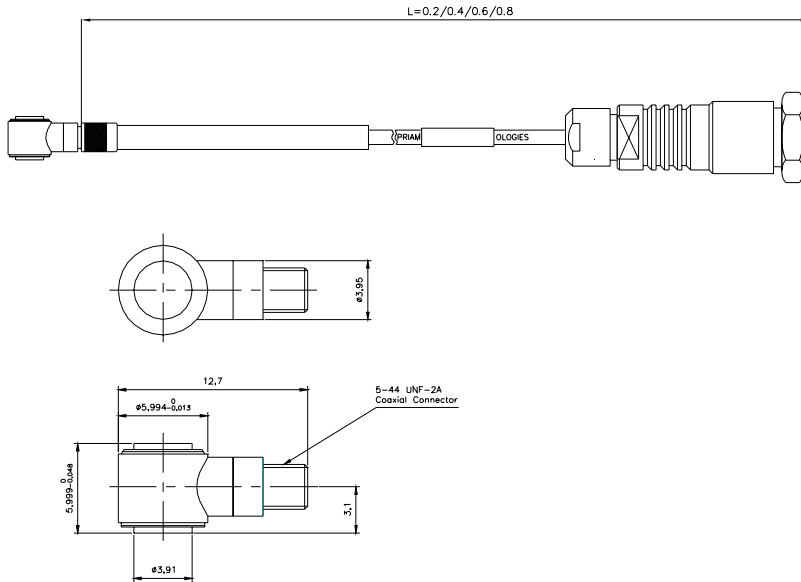
¹⁾ The exact sensitivity is shown on a separate calibration sheet

²⁾ The permanent temperature of the sensor body can be higher than the specified value of the mold temperature. The temperature at the cable connector however is limited. In practice there are no mold temperatures higher than 200 °C expected.

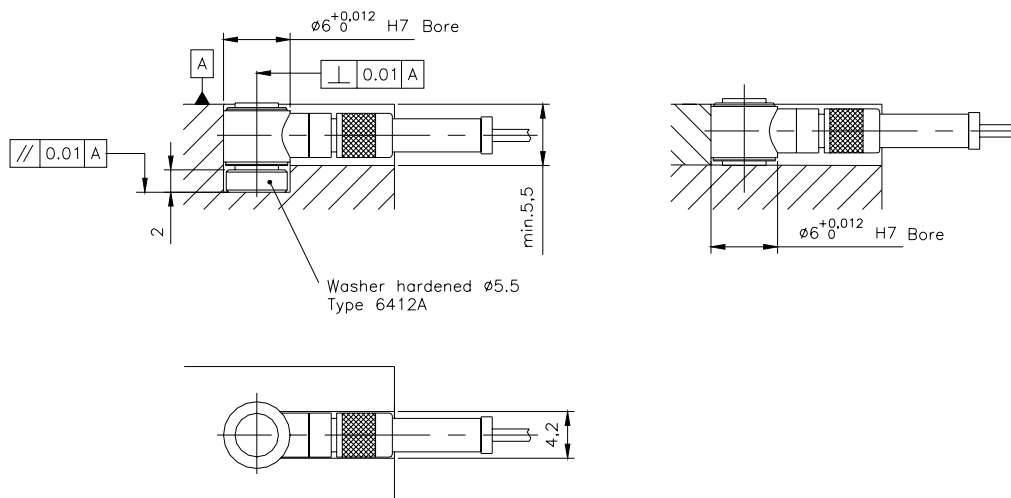
³⁾ The natural frequency of the sensor is far higher than the frequency spectrum of the effective signal

Dimensions

Type 6411A...



Mounting dimensions



Scope of delivery

Mounting plate type 6581A
 Identification label
 Washer type 6412A

Accessories

Connecting cable type 1052A...

Order codes

Sensor:
 Sensor including connecting cable type 1006A...:

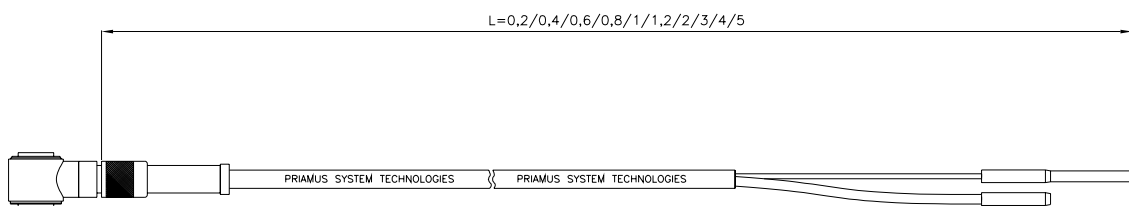
Type 6411A
 Type 6411A0,2 / 0,4 / 0,6 / 0,8

Type 6411B-M

Type 6411B-M has been developed especially to be connected to the multi pin connector type 1190A and has the following advantages:

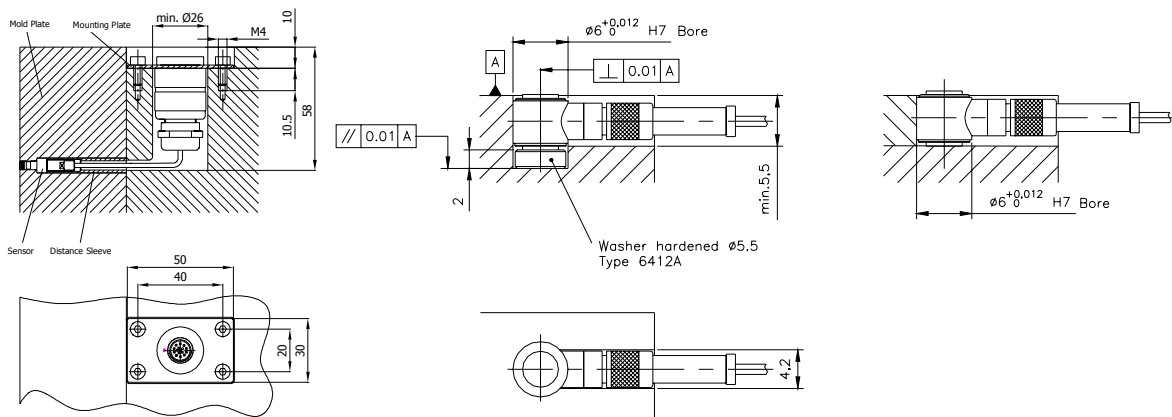
- Easy handling
- Cost-effective (less cables are being needed)
- Can be assembled by the user
- Can be combined with sensors and quick disconnects
- Self-explanatory due to a clever color system
- Sensitivity detection

Dimensions



Mounting dimensions

With multi pin connector



Subject to technical amendments

Scope of delivery

Mounting plate type 6581A
 Identifikationsschild
 Washer type 6412A

Accessories

Ejector tool for crimp contacts, type 1310A
 Connecting cable type 1052A...
 Crimping pliers type 1311A
 Crimping contacts type 1312A

Order codes

Sensor incl. connecting cable
 type 1006Ax,x-M

Type 6411A0,2-M / Type 6411A0,4-M
 Type 6411A0,6-M / Type 6411A0,8-M

Connection samples

Measuring chain

